

MAKERS EMPIRE

Simple step by step guide to...

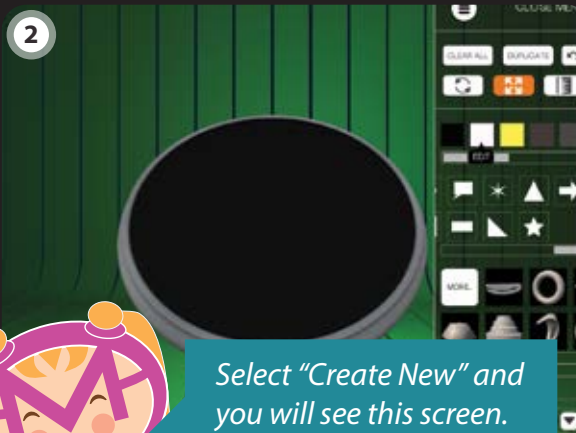
Making an elephant phone holder

TOOL TIP

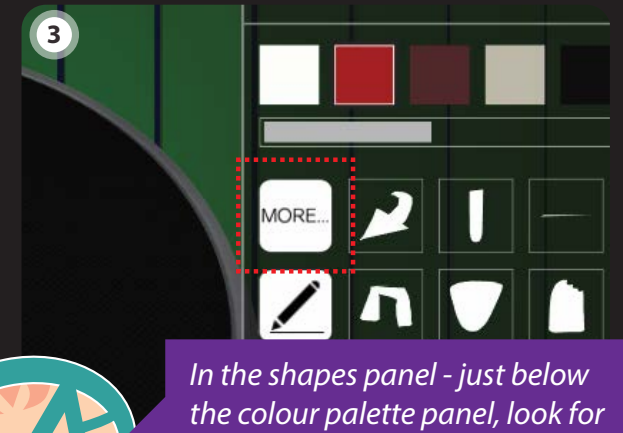


The MORE... button allows you to import other shapes or 3D objects into your tool bar.

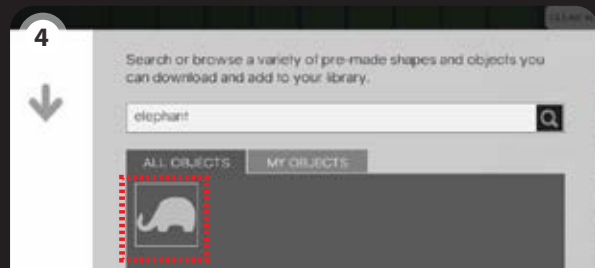
Start Makers Empire and tap the Shaper menu item.



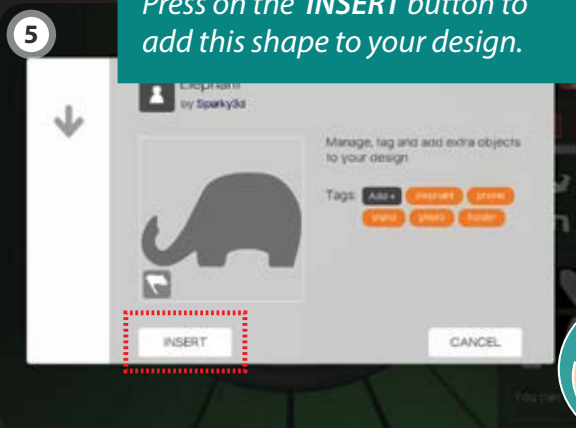
Select "Create New" and you will see this screen.



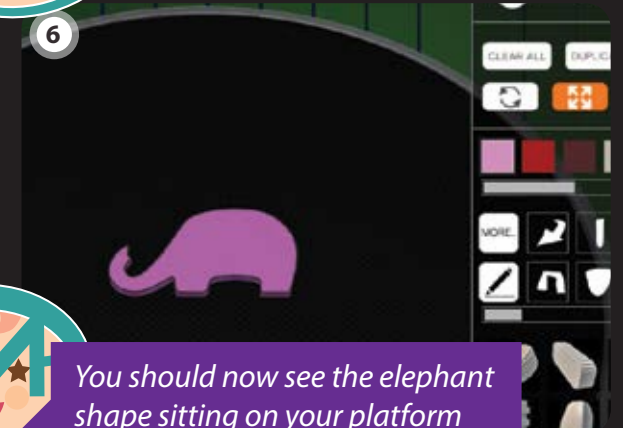
In the shapes panel - just below the colour palette panel, look for and click on the **MORE...** button



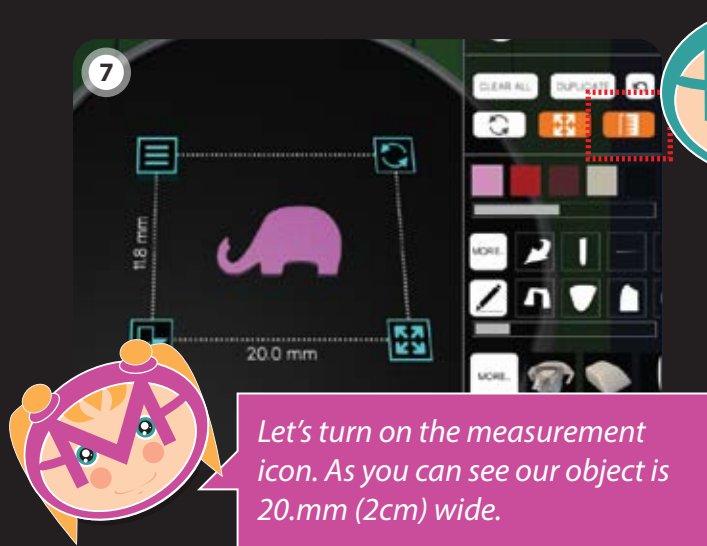
in the search bar that appears type the word "elephant". Click the elephant icon.



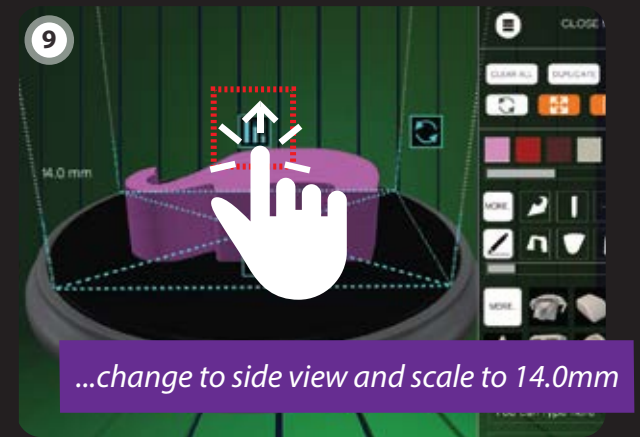
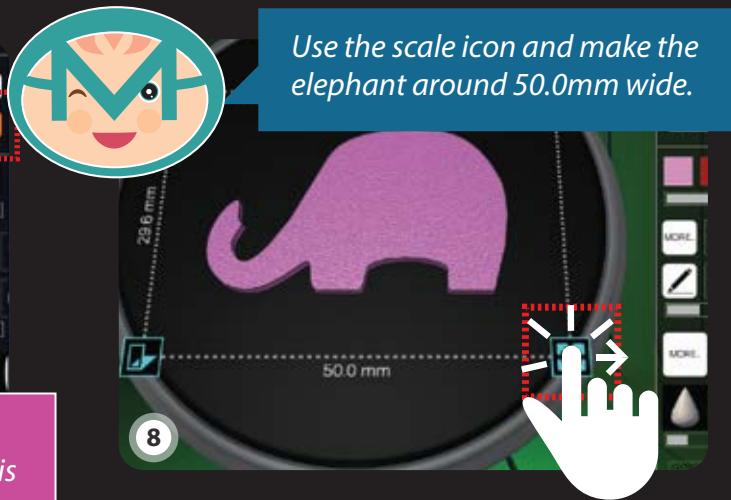
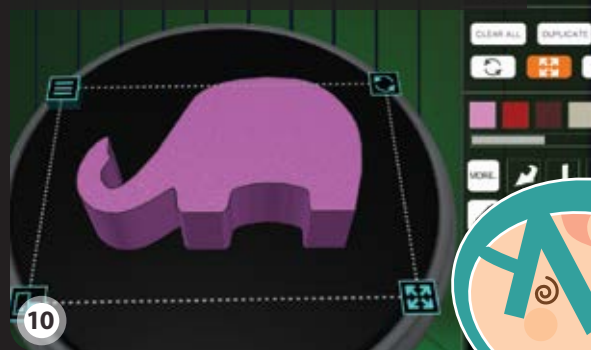
Press on the **INSERT** button to add this shape to your design.



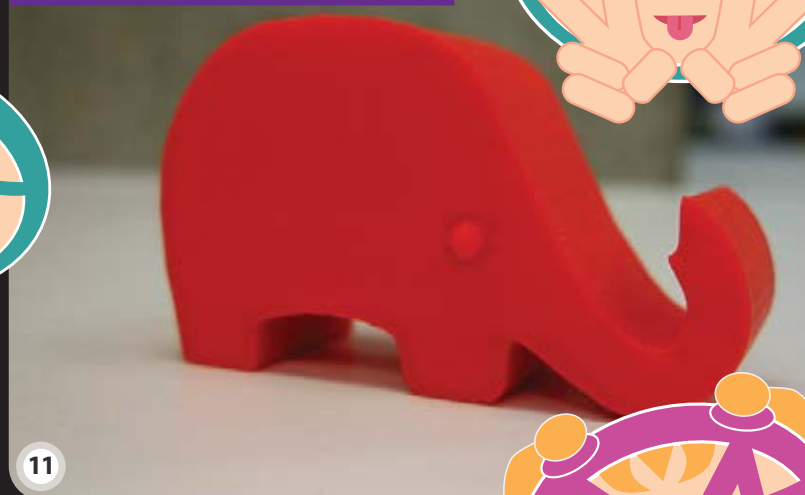
You should now see the elephant shape sitting on your platform



Turn off measurements and we are finished..



You could also add extras to your elephant phone holder, I've added a small sphere for an eye in this 3D print.



TOOL TIP



The draw button gives you the freedom to create your own outline shape. The elephant shape used in this tutorial was created with draw.

Feeling creative? Try and create your very own phone holder shape using the draw button.

We would love to see your original phone holder design.